

Evaluating the *i*Coupler ADuM144xARQZ with the EVAL-ADuM144x-EVB evaluation system

FEATURES

- Access to all 4 data channels
- Multiple Connection Options
- Support for Tektronix Active probes
- Provision for cable terminations
- Support for PCB edge mount coax connectors
- Easy Configuration
- Installed ADuM1441 *i*Coupler in the QSOP package

SUPPORTED *i*Coupler® MODELS

ADuM1440ARQZ
ADuM1441ARQZ
ADuM1442ARQZ
ADuM1445ARQZ
ADuM1446ARQZ
ADuM1447ARQZ

GENERAL DESCRIPTION

The EVAL-ADuM144x-EBZ supports the ADuM144x family of ultra low power, quad channel isolators. It provides a JEDEC standard QSOP16 pad layout, support for signal distribution, loop back, bypass capacitors and loads referenced to V_{DDX} or GND_X . Signal sources can be wired onto the board as well as brought in through Edge mounted SMA connectors (not provided) or terminal blocks for power connections. The board includes 200 mil header positions for compatibility with Tektronix active probes.

The board follows best PCB design practices for four layer boards, including a full power and ground plane on each side of the isolation barrier. No other EMI or noise mitigation practices are included in this board.

EVALUATION BOARD

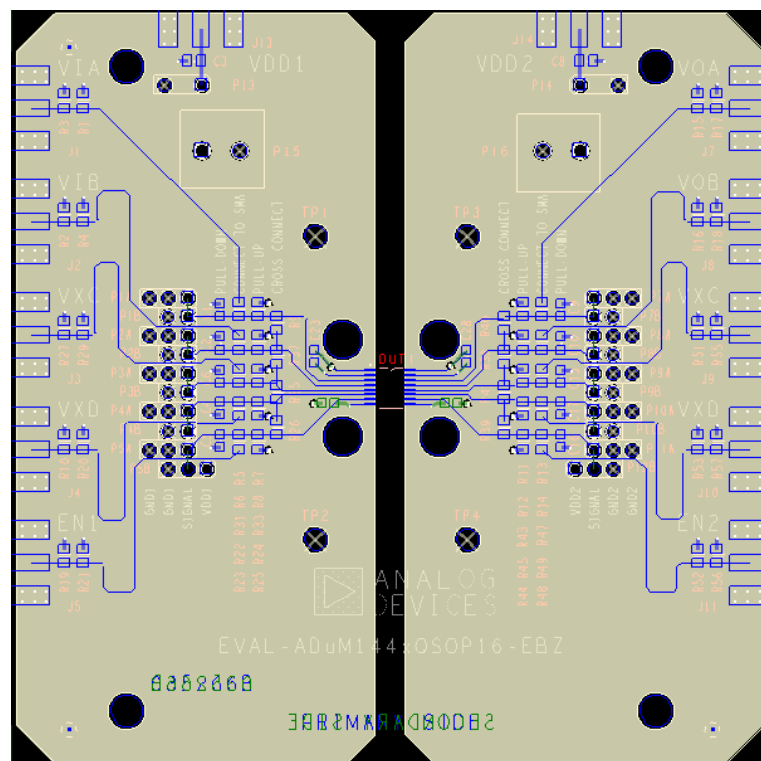


Figure 1. EVAL-ADuM144xQSOP16-EBZ Evaluation Board

TABLE OF CONTENTS

Features.....	1	Part configuration structures.....	3
Supported iCoupler® Models	1	Bypass on the PCB.....	3
General Description	1	Provision for loading	Error! Bookmark not defined
Evaluation Board	1	EMI Mitigation	Error! Bookmark not defined
Revision History	2	High Voltage Capability	4
PCB evaluation goals	3	Bill of Materials	6
Connectors	3		

REVISION HISTORY

10/12—Revision 0: Initial Version

PCB EVALUATION GOALS

This board is intended to achieve several goals.

- 1) Evaluate the full range of iCoupler data transfer functions
- 2) Power each side independently
- 3) Allow high differential voltage to be applied between the two sides of the iCoupler
- 4) Allow easy connections of data power and instrumentation

While the evaluation board comes with the ADuM1441 installed, it is compatible with the entire ADuM144x family and the user can substitute other components in the family.

CONNECTORS

This evaluation system evaluates many of different aspects of performance. Connections to power and instrumentation are critical to performing accurate measurements without creating artificial ringing, reflections, ripple and EMI.

The PCB provides support for three types of interconnect, SMA edge connectors and through hole signal ground pairs and terminal blocks for power. With these three options, both temporary and permanent connections to the board are easily made. When coax connections are desired, SMA connector positions are available for V_{DD1} and V_{DD2} power input as well as all inputs and outputs. Due the expense of populating so many connectors that the customer may not require, these positions are left to the customer to populate. These connectors, shown in Figure 2, were chosen because they are low profile and provide excellent mechanical connections to the PCB and support 50 ohm coax cabling. Most lab equipment is geared toward use of BNC connectors, so adaptors will be required to use the on board connectors.

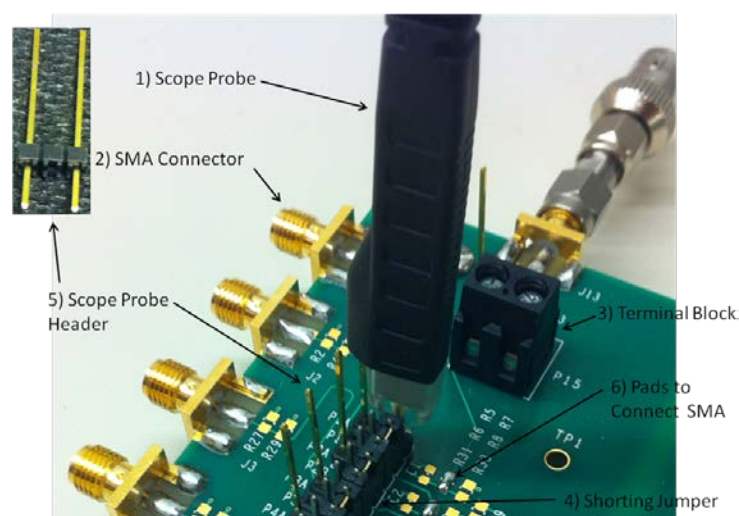


Figure 2 Optional Components

Power can be connected through the terminal blocks provided, or directly wired to the PCB via the through hole connectors P6 and P7. These provide a power ground pair with the power on the pin 1 hole. These through holes are

on 200mil centers which matches the pin spacing required for Tektronix active probes. If scope probe connection is desired, the header shown in Figure 2 can be soldered into the through holes positions and the signal pin trimmed to match the height requirements of a Tektronix Active probe.

POWER INPUT

Each side of the ADuM144x requires an off board power source. These must be independent if common voltages are to be applied across the isolation barrier. Sharing a single supply for both sides of the part will not harm the isolator, and is useful for functional testing of the ADuM144x when common mode voltages will not be present.

Power can be connected through the terminal blocks P1 and P2. In addition, 200mil header locations (P13 and P14) are provided for installation of a Scope probe header or direct wiring to the PCB. A bypass capacitor position and a pad layout for an SMA connector are provided to install optional components.

A Power and Ground plane are present on layers 2 and 3 of the PCB on each side of the isolation barrier. Power connects to V_{DD1A} and V_{DD1B} for side 1, V_{DD2A} and V_{DD2B} for side 2. The A and B power pins on each side cannot be powered separately.

DATA I/O STRUCTURES

Each data channel has a variety of structures to help configuring loading and monitoring both the input and output. Figure 4 shows one of the data paths from external connection to the DUT pin. Each channel has similar connections.

Starting at the external connection, the signal path is

- 1) A pad layout for a PCB board edge mounted SMA connector
- 2) Two 0805 pads are provided where 100Ω resistors to ground can be installed. The combined resistance will be 50Ω to provide a termination for a standard coax cable.
- 3) A standard 0805 pad layout that allows the coax and termination structures to be connected to the rest of the signal path.
- 4) An 0605 pad layout between the signal path and VDD can be used for installing a pull-up resistor.
- 5) A populated two-pin header provides a signal ground pair that can be used for clip leads or shorting a channel to ground temporarily.
- 6) There is a grouping of three open through holes, consisting of a signal and two ground connections. This can be used for hard wiring signal wires into the PCB, installing a header to accept a Tektronix active probe, or installing a two pin header to allow adjacent channels to be temporarily shorting them together.

- 7) This is an 0805 pad layout between the signal and ground where a load capacitor or resistor can be installed.
- 8) Pads to the adjacent channels are provided to allow permanent connection of adjacent channels. Inputs can be fanned out to several channels, or inputs and outputs can be connected together to allow looping back of signals.

Figure 2 shows many of the optional components installed, and how jumpers can be used to temporarily connect channels. This figure shows a signal connected to the first channel SMA and then fanned out to the top three channels and monitored by an active scope probe.

BYPASS ON THE PCB

Several positions and structures are provided to allow optimum bypass of the evaluation board. Provision has been made for optional surface mount bulk capacitors to be installed near the power connectors to compensate for long

cables to the power supply or external load. Parallel bypass capacitors are installed near the ADuM144x consisting of a 0.1μF capacitor for V_{DDPA} on the top side and V_{DDPB} on the bottom side of the board.

The PCB also implements distributed capacitive bypass on PCB. This consists of power and ground planes closely spaced on the inner layers of the PCB. This minimizes the condition of noise and transmission of EMI without extraordinary design features.

HIGH VOLTAGE CAPABILITY

This PCB is designed in line with 2500V basic insulation practices. High voltage testing beyond 2500V is not recommended. Appropriate care must be taken when using this evaluation board at high voltages, and it should not be relied on for safety functions since it has not been hi-pot tested or certified for safety.

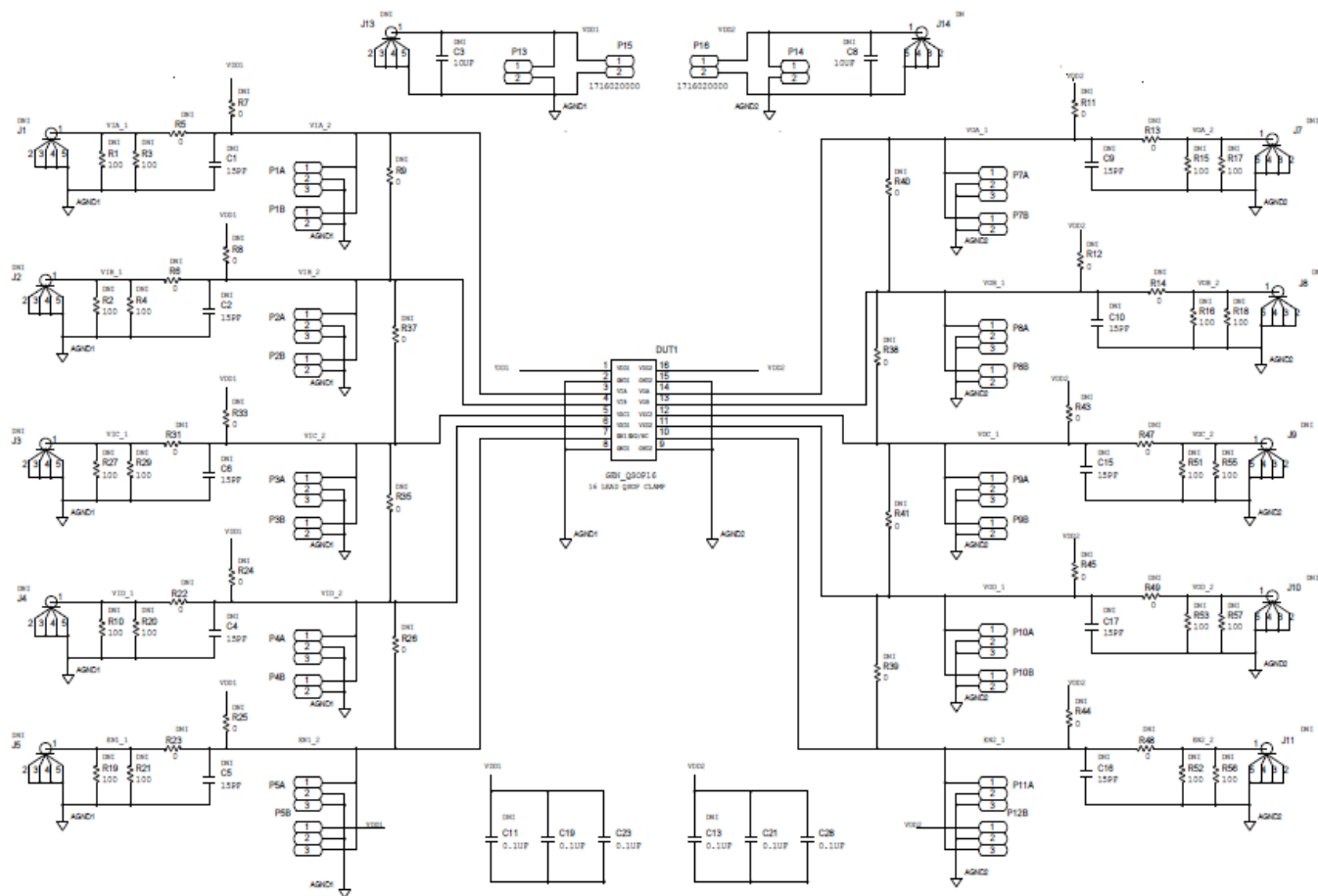
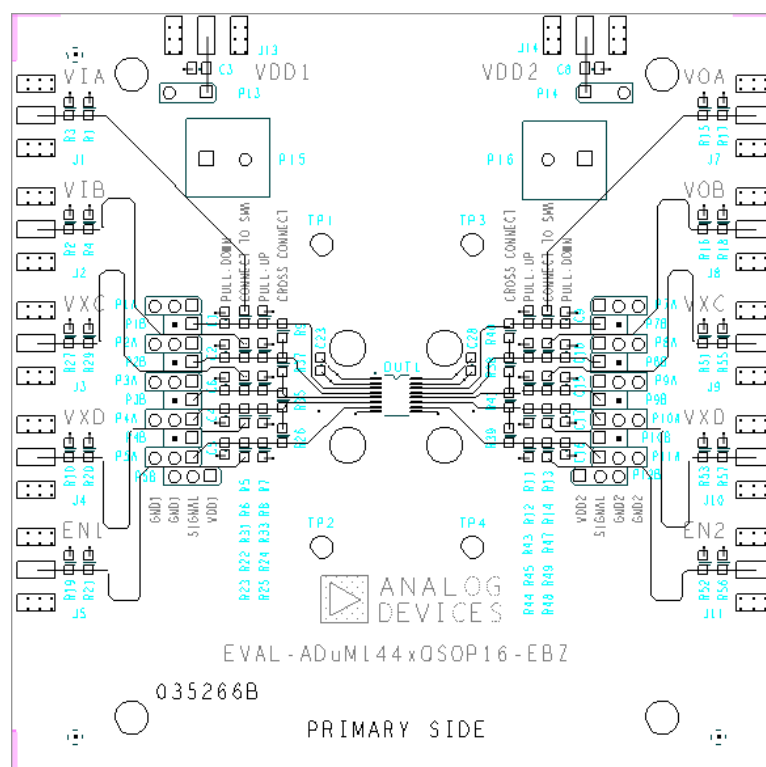
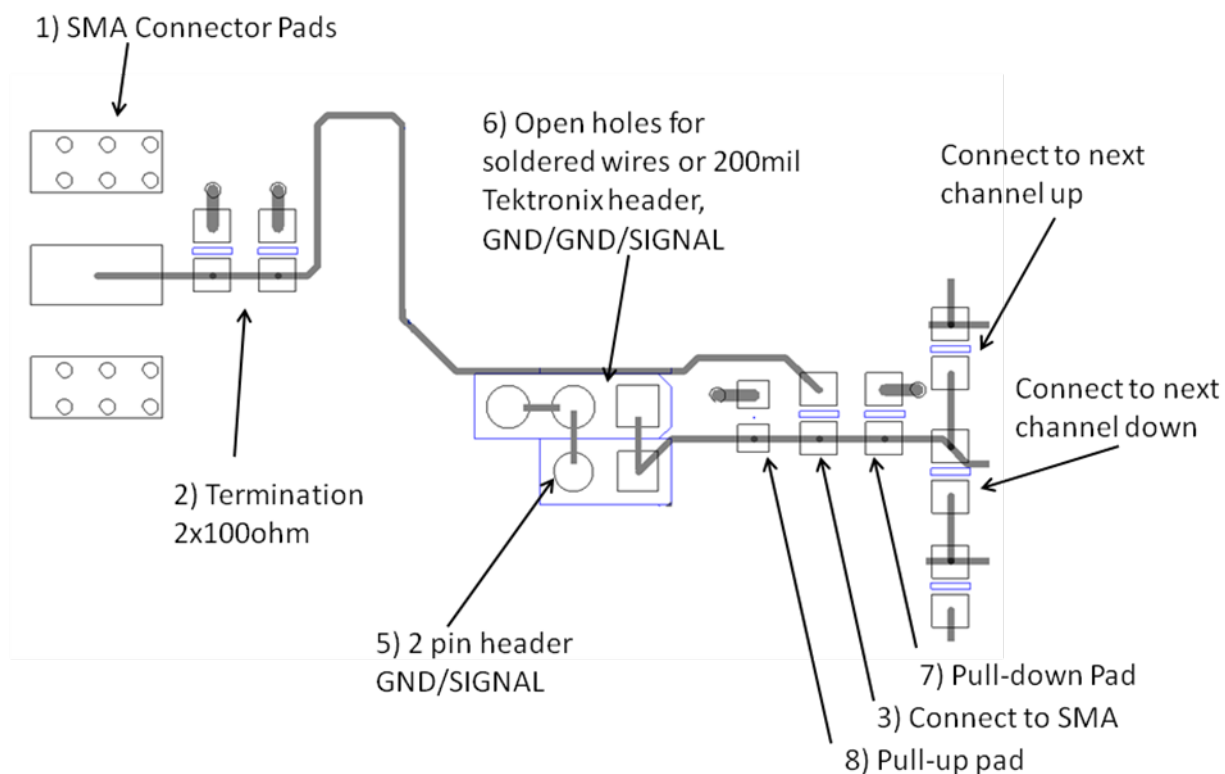


Figure 3. ADuM144xEBZ Schematic



BILL OF MATERIALS**Table 1.**

Quantity	Reference Designator		Description
1	U1	ADuM144x	DUT
2	C23 C28		0.1 μ F, 16 V, 10%, 0603
2	C3, C8		0603 bypass capacitor position (Not Installed)
42	R1-R27,29,31,33, 43-45,47-49,51-53, 55-57		0805 pad for customer use
10	C1-C5, C15-C16		0603 pad for customer use
2	P1, P2	ED2609-ND	Terminal Block
12	P1A-P12A, P13, P14	MTSW202-12-G-S	Two Pin Header 200 mil spacing (Not Installed)
2	P5B, P12B	90726-403HLF	Three Pin Header 100mil spacing
8	P1B-P4B, P7B-P10B	HTSW-102-07-T-S	Two Pin Header 100mil spacing
12	J1-J5, J7-J11,J13,J14	JOHNSON142-0701-851	SMA edge connector, (Not Installed)

NOTES

NOTES

NOTES



ESD Caution

ESD (electrostatic discharge) sensitive device. Charged devices and circuit boards can discharge without detection. Although this product features patented or proprietary protection circuitry, damage may occur on devices subjected to high energy ESD. Therefore, proper ESD precautions should be taken to avoid performance degradation or loss of functionality.

Legal Terms and Conditions

By using the evaluation board discussed herein (together with any tools, components documentation or support materials, the "Evaluation Board"), you are agreeing to be bound by the terms and conditions set forth below ("Agreement") unless you have purchased the Evaluation Board, in which case the Analog Devices Standard Terms and Conditions of Sale shall govern. Do not use the Evaluation Board until you have read and agreed to the Agreement. Your use of the Evaluation Board shall signify your acceptance of the Agreement. This Agreement is made by and between you ("Customer") and Analog Devices, Inc. ("ADI"), with its principal place of business at One Technology Way, Norwood, MA 02062, USA. Subject to the terms and conditions of the Agreement, ADI hereby grants to Customer a free, limited, personal, temporary, non-exclusive, non-sublicensable, non-transferable license to use the Evaluation Board FOR EVALUATION PURPOSES ONLY. Customer understands and agrees that the Evaluation Board is provided for the sole and exclusive purpose referenced above, and agrees not to use the Evaluation Board for any other purpose. Furthermore, the license granted is expressly made subject to the following additional limitations: Customer shall not (i) rent, lease, display, sell, transfer, assign, sublicense, or distribute the Evaluation Board; and (ii) permit any Third Party to access the Evaluation Board. As used herein, the term "Third Party" includes any entity other than ADI, Customer, their employees, affiliates and in-house consultants. The Evaluation Board is NOT sold to Customer; all rights not expressly granted herein, including ownership of the Evaluation Board, are reserved by ADI. **CONFIDENTIALITY.** This Agreement and the Evaluation Board shall all be considered the confidential and proprietary information of ADI. Customer may not disclose or transfer any portion of the Evaluation Board to any other party for any reason. Upon discontinuation of use of the Evaluation Board or termination of this Agreement, Customer agrees to promptly return the Evaluation Board to ADI. **ADDITIONAL RESTRICTIONS.** Customer may not disassemble, decompile or reverse engineer chips on the Evaluation Board. Customer shall inform ADI of any occurred damages or any modifications or alterations it makes to the Evaluation Board, including but not limited to soldering or any other activity that affects the material content of the Evaluation Board. Modifications to the Evaluation Board must comply with applicable law, including but not limited to the RoHS Directive. **TERMINATION.** ADI may terminate this Agreement at any time upon giving written notice to Customer. Customer agrees to return to ADI the Evaluation Board at that time. **LIMITATION OF LIABILITY.** THE EVALUATION BOARD PROVIDED HEREUNDER IS PROVIDED "AS IS" AND ADI MAKES NO WARRANTIES OR REPRESENTATIONS OF ANY KIND WITH RESPECT TO IT. ADI SPECIFICALLY DISCLAIMS ANY REPRESENTATIONS, ENDORSEMENTS, GUARANTEES, OR WARRANTIES, EXPRESS OR IMPLIED, RELATED TO THE EVALUATION BOARD INCLUDING, BUT NOT LIMITED TO, THE IMPLIED WARRANTY OF MERCHANTABILITY, TITLE, FITNESS FOR A PARTICULAR PURPOSE OR NON-INFRINGEMENT OF INTELLECTUAL PROPERTY RIGHTS. IN NO EVENT WILL ADI AND ITS LICENSORS BE LIABLE FOR ANY INCIDENTAL, SPECIAL, INDIRECT, OR CONSEQUENTIAL DAMAGES RESULTING FROM CUSTOMER'S POSSESSION OR USE OF THE EVALUATION BOARD, INCLUDING BUT NOT LIMITED TO LOST PROFITS, DELAY COSTS, LABOR COSTS OR LOSS OF GOODWILL. ADI'S TOTAL LIABILITY FROM ANY AND ALL CAUSES SHALL BE LIMITED TO THE AMOUNT OF ONE HUNDRED US DOLLARS (\$100.00). **EXPORT.** Customer agrees that it will not directly or indirectly export the Evaluation Board to another country, and that it will comply with all applicable United States federal laws and regulations relating to exports. **GOVERNING LAW.** This Agreement shall be governed by and construed in accordance with the substantive laws of the Commonwealth of Massachusetts (excluding conflict of law rules). Any legal action regarding this Agreement will be heard in the state or federal courts having jurisdiction in Suffolk County, Massachusetts, and Customer hereby submits to the personal jurisdiction and venue of such courts. The United Nations Convention on Contracts for the International Sale of Goods shall not apply to this Agreement and is expressly disclaimed.